

Manual for fingerprint lock

Note: The introduction contains 2 parts- lock and Bluetooth operation

The 1st Part: Operation for Device

Operation Instructions

- * Only allow to add or delete fingerprint after being authorized by administrator.
- * Before adding fingerprint, any fingerprint can unlock the lock. And Fingerprint not added can't unlock it after fingerprint are set.

1.Add fingerprint:

Long press fingerprint sensor for 5 seconds or more. Release your finger when the indicator light turns blue. Wait for the indicator to flashes green to start fingerprint registration. To register a fingerprint, press your intended finger on the sensor. The indicator will flash blue and green at the beginning, then turn solid blue once a fingerprint sample is collected. If the indicator turns red, sample collection has failed. Press the sensor to try again. the same finger 5 times at different angle to complete the registration process. When the sensor has successfully collected 5 samples of the same finger, will the indicator turns solid green.

2.To add a fingerprint after lock is already registered:

Press and hold the sensor for 3 seconds. Release when the indicator flashes blue once. Wait for the indicator turn solid blue to enter registration mode. Press the sensor with a registered fingerprint (that is, the first one set). When the blue

indicator turns to flash green, When the sensor has successfully collected 5 samples of the same finger, will the indicator turns solid green.

3.Delete all fingerprint and Bluetooth data :

Press and hold the sensor for 5 seconds. Release when the indicator flashes blue twice. Wait for the indicator turns solid red and press on the sensor with a registered fingerprint.All fingerprints are deleted when the indicator flashes green.

4.Unlock:

If input right fingerprint , the green light will be on and lock is unlocked. Otherwise the red light will flash twice.

5.Low power:

if power is below 3.5V, the red light keeps flash quickly for 5s. Add, delete is not allowed and enter into normally open mode automatically.

What the light status and sound mean

Status	Red-LED	Green-LED	Remark
Add fingerprint	Failed, short flash twice, please re-record	One Flash means this record succeeded. After 5 times successful adding, the green light keeps on and it says record finished.	Press the finger for 5s. If there are fingerprint added before, release it once the green light is on. If not, release it when green light flashed. Authorization is needed If there is an administrator.
Delete fingerprint	Failed, flash twice	The green light keeps on if succeeded.	Press for 5s, release it when the blue light flashes. Need administrator's authorization if there is an administrator
Unlock with fingerprint	Flash twice if failed its "Wrong fingerprint"	Green light flash when unlock successfully.	Motor unlock when input fingerprint
Low power reminding	Flash 5 times continuously		Whenever input a fingerprint

The 2nd part: operation with Bluetooth APP

1. Software download method and installation

Turn on the phone, scan the QR code to download the APP according to the different operating systems of the phone and the different users, and install the software according to the prompts. The specific operation methods are as follows:

APP download:

a) Apple mobile phone users: search in AppStore: YouLock; or directly scan the following QR code to download:

b) Android phones (not in China): Search in the Googel application market: YouLock; or directly scan the following QR code to download:

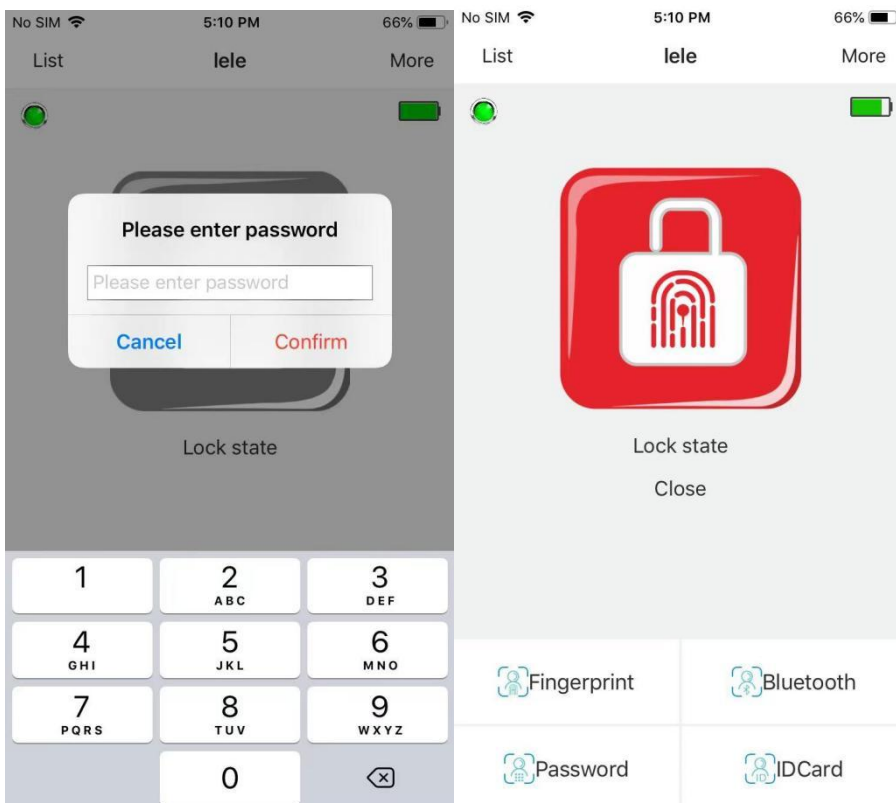


The software icon after installation is as follows:

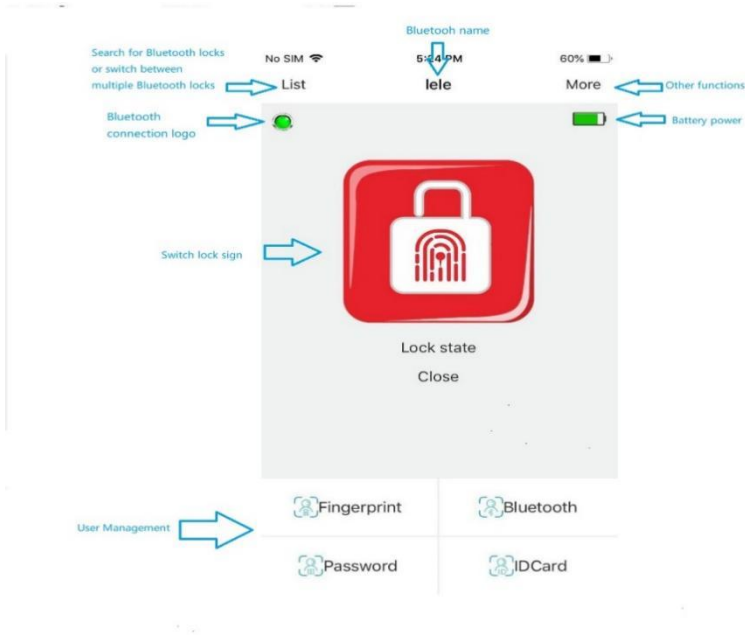


2, Log In

Turn on the Bluetooth of the mobile phone, press the fingerprint wake-up lock with your finger, open the APP, and enter the password. The first administrator password is: 123456. If it is another user (Bluetooth user or guest), enter the corresponding password.



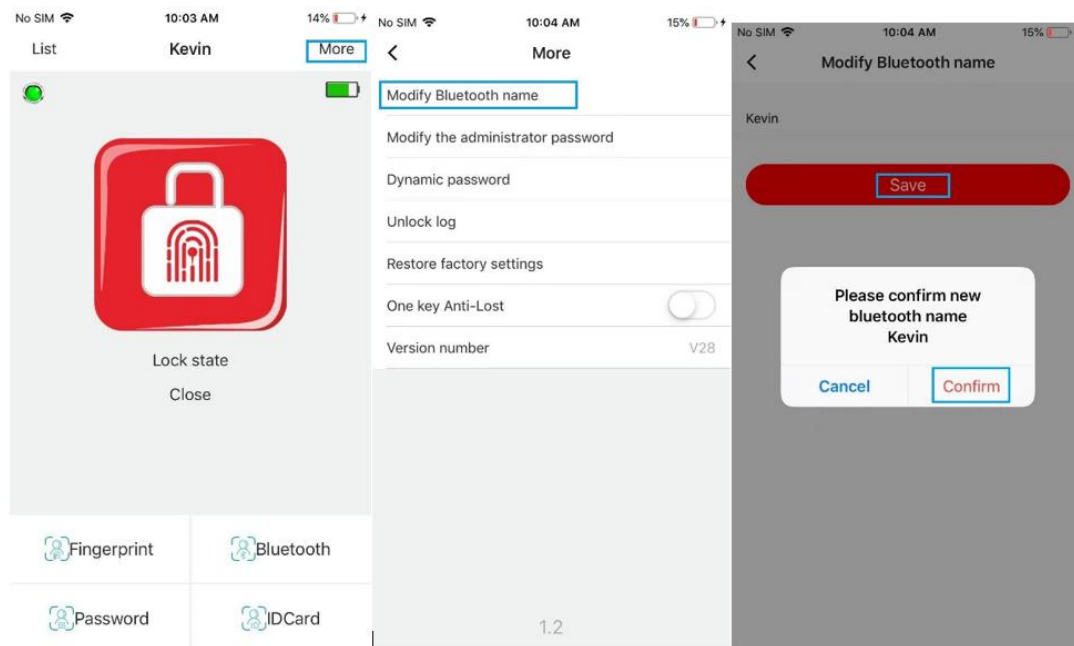
The interface instructions are as follows:



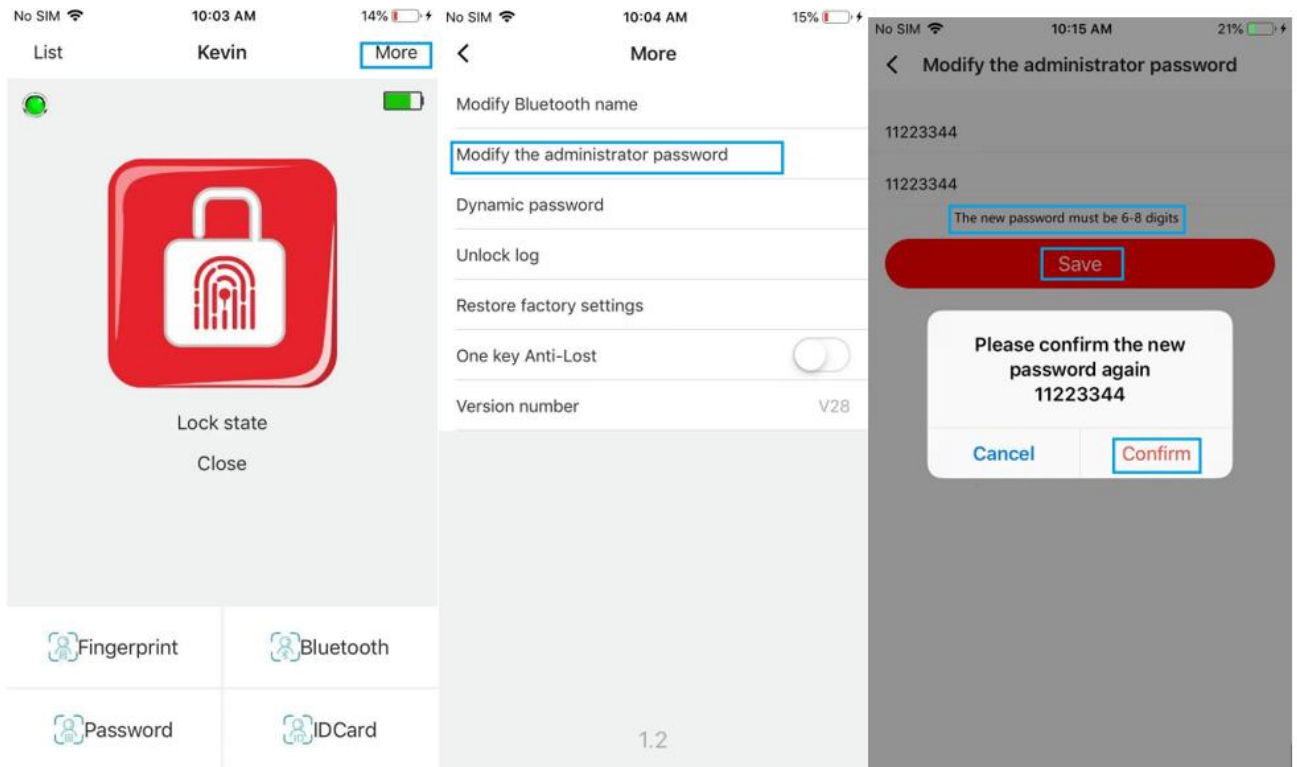
3. Introduction to auxiliary functions

Click "More", you can modify the Bluetooth name, administrator password, send dynamic password, view unlock log, restore factory settings, turn on and off the one-key anti-lost function. The following specifically describes the usage of each function:

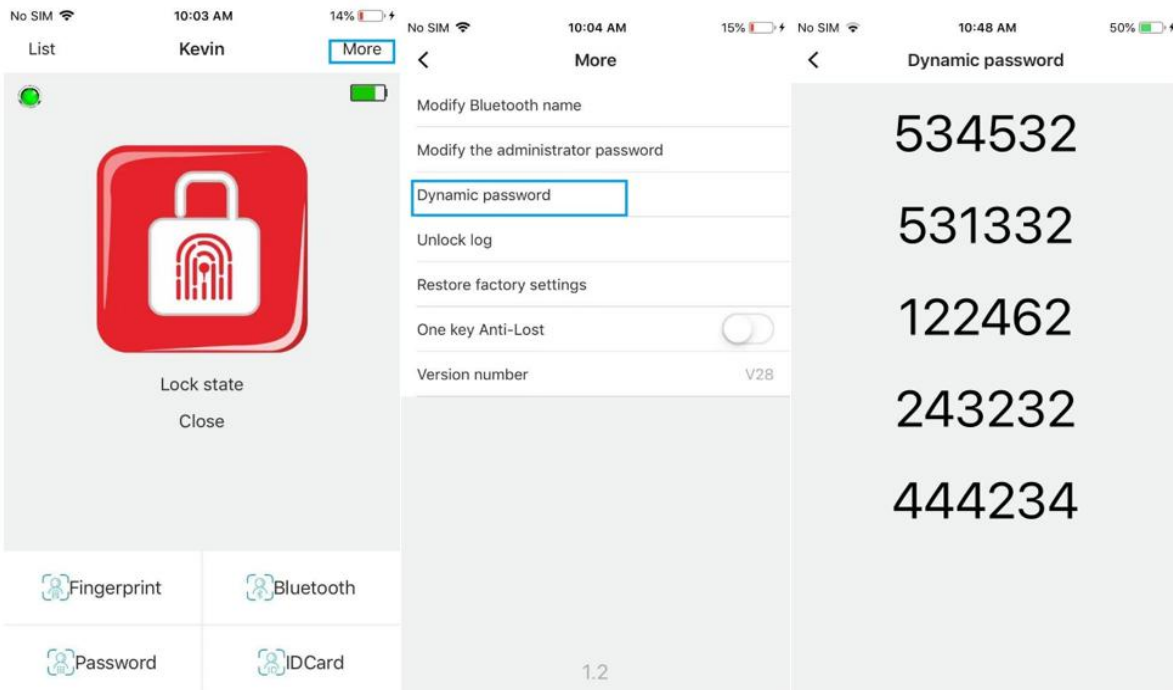
(1) Modify the Bluetooth name After the lock body is connected with the APP, the APP interface will display the digital Bluetooth name, and the user can modify the Bluetooth name through the APP



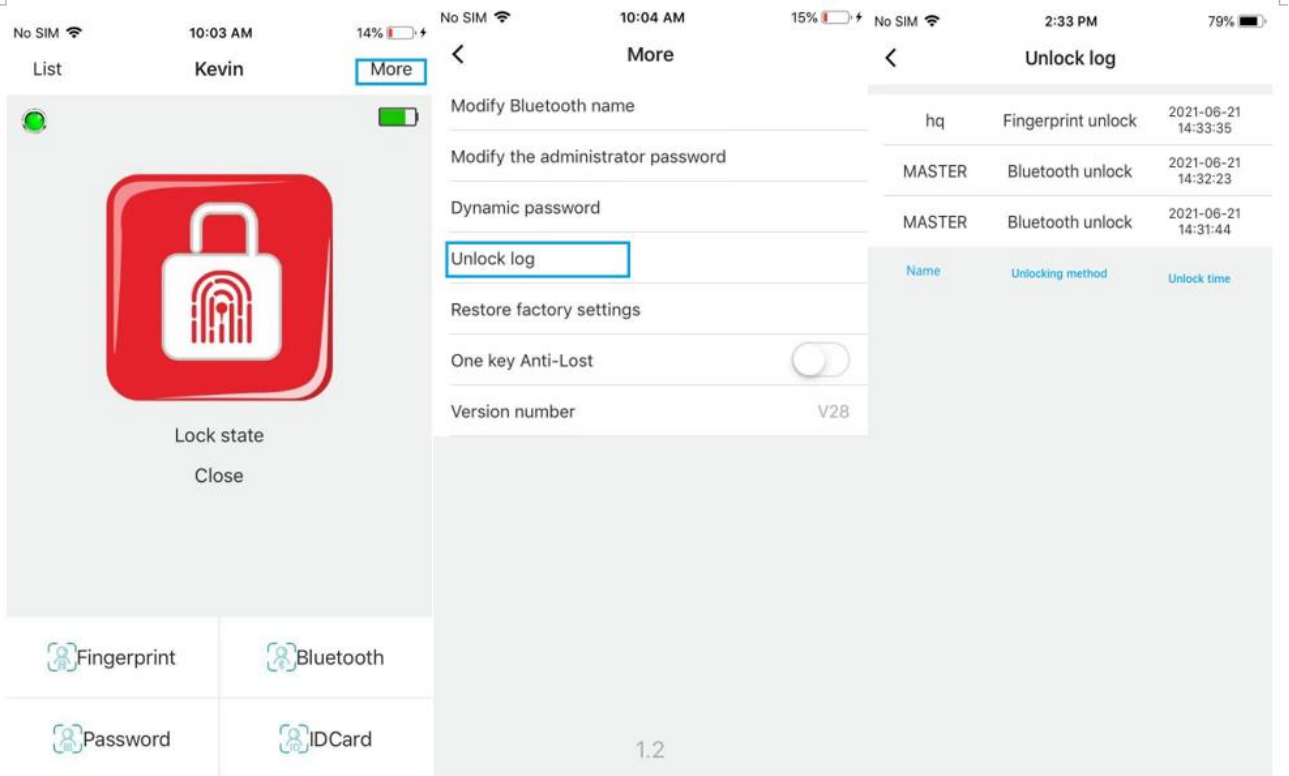
(2) After logging in, please modify the administrator password in time. After the lock is connected to the APP for the first time or restored to the factory, the administrator password is 123456. After logging in, please modify the administrator password in time



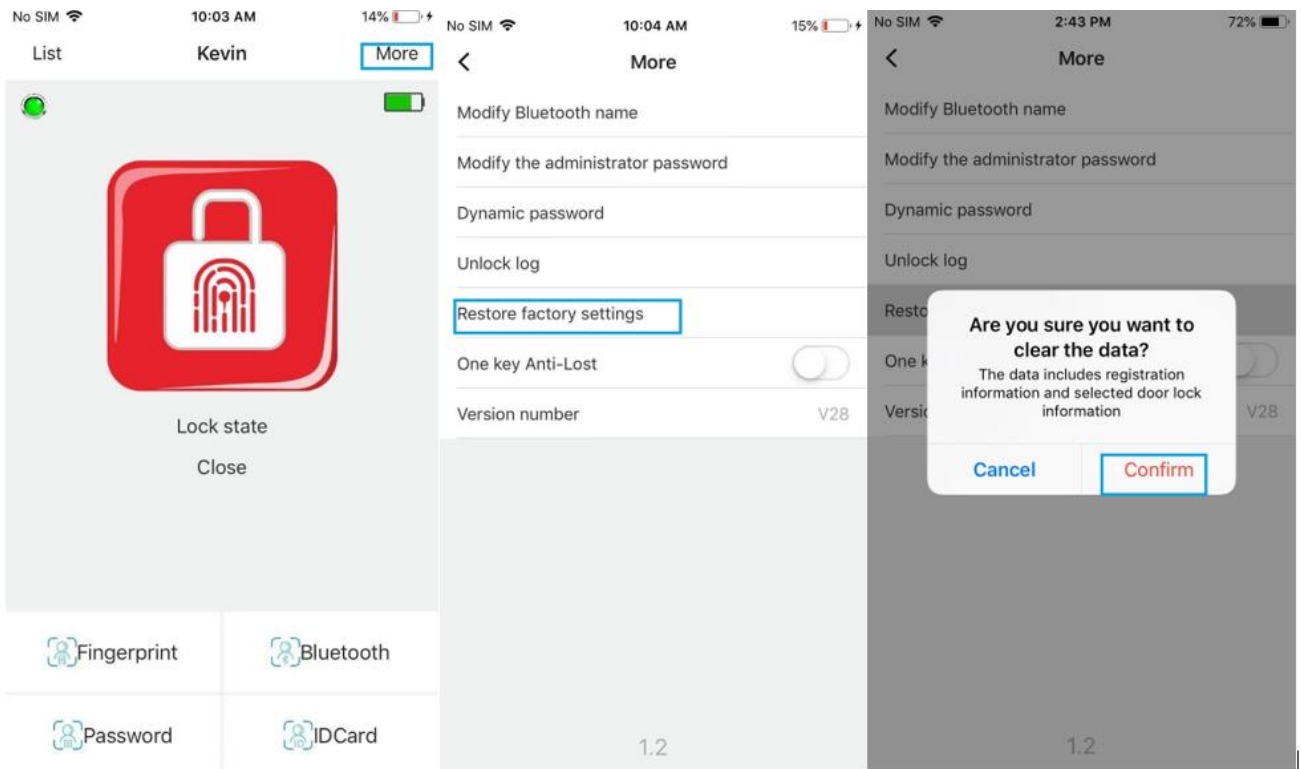
(3) Dynamic password. If the lock terminal supports password unlocking, you can share this password with friends and family as a temporary unlocking password. If the lock terminal does not support password unlocking, you can share this password with other Bluetooth users to download the APP and log in to the APP with the dynamic password to unlock. You can only switch the lock after logging in, and logging in again is invalid once valid.



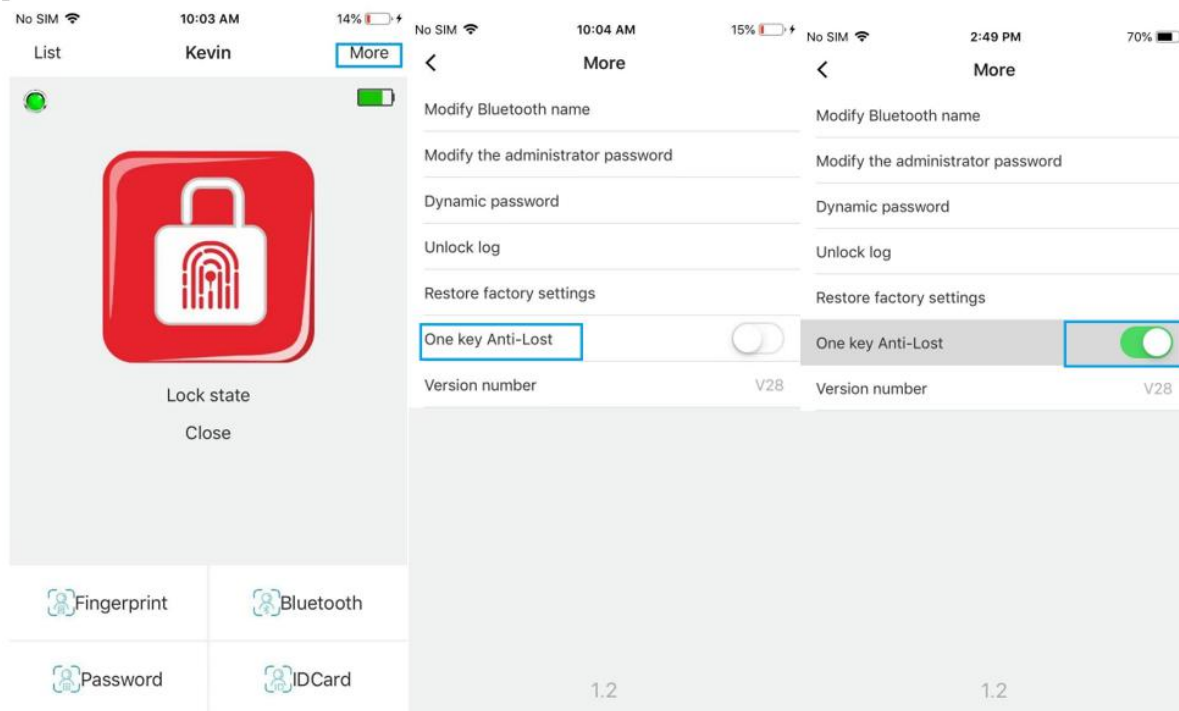
(4) Unlock log. Turn on this function to view all unlocking records. If the lock end has no perpetual calendar function, part of the unlock mode time is invalid.



(5) Factory reset. Click the corresponding operation to restore factory settings



(6) One-key anti-lost. Turn on this function, when the lock body leaves the Bluetooth signal receiving range of the mobile phone, the mobile phone will start to alarm



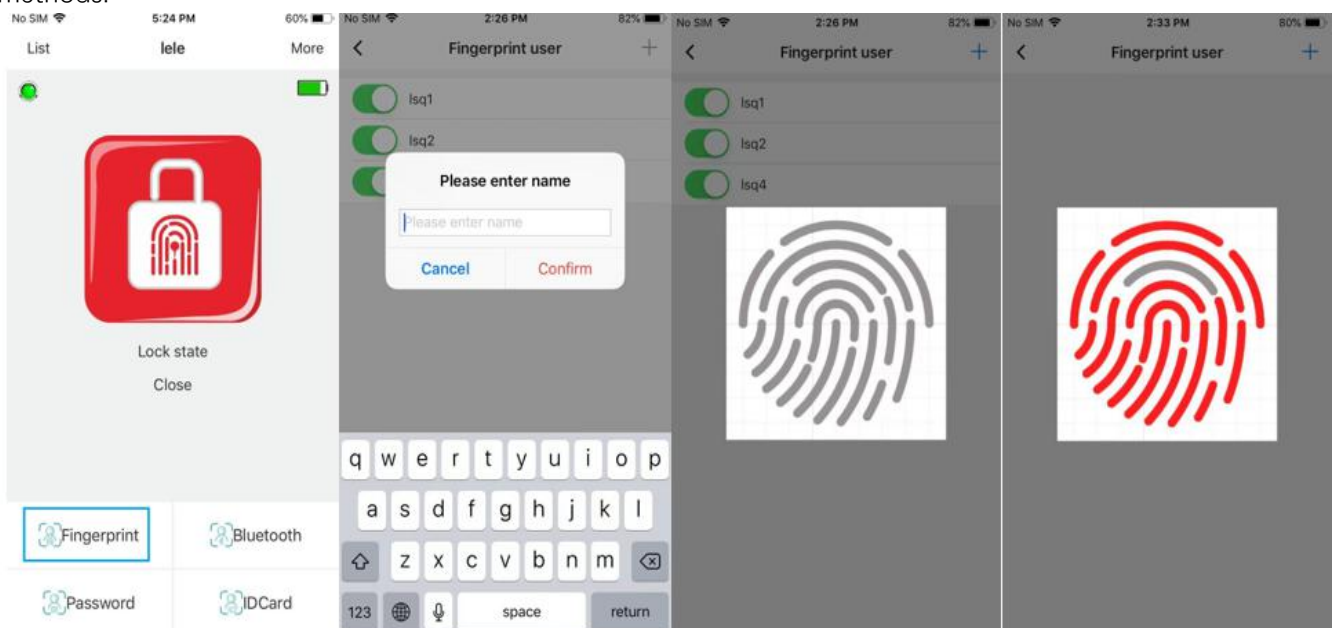
4. Unlocking method and method of use

At present, this APP has designed four unlocking methods, **Fingerprint**, **Bluetooth**, **Password**(only for some models), and **ID Card**(only for some models). The following describes how to use each method:

(1) Fingerprint

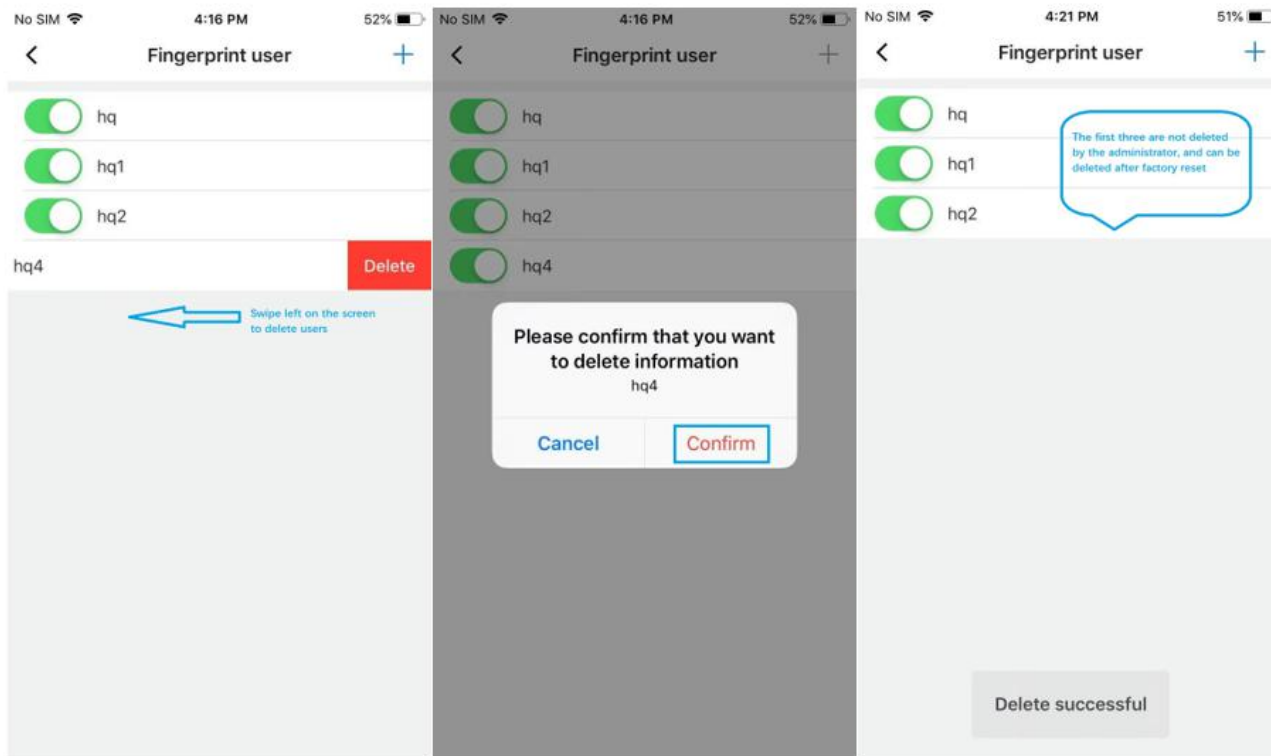
a. Fingerprint entry method:

Click "Fingerprint" to enter the fingerprint, and click the "+" in the upper right corner of the interface to enter the fingerprint name, the fingerprint lock indicator will light up, and after the fingerprint pattern appears in the APP, you can press the fingerprint to enter it. Enter other users and add them through the above methods.



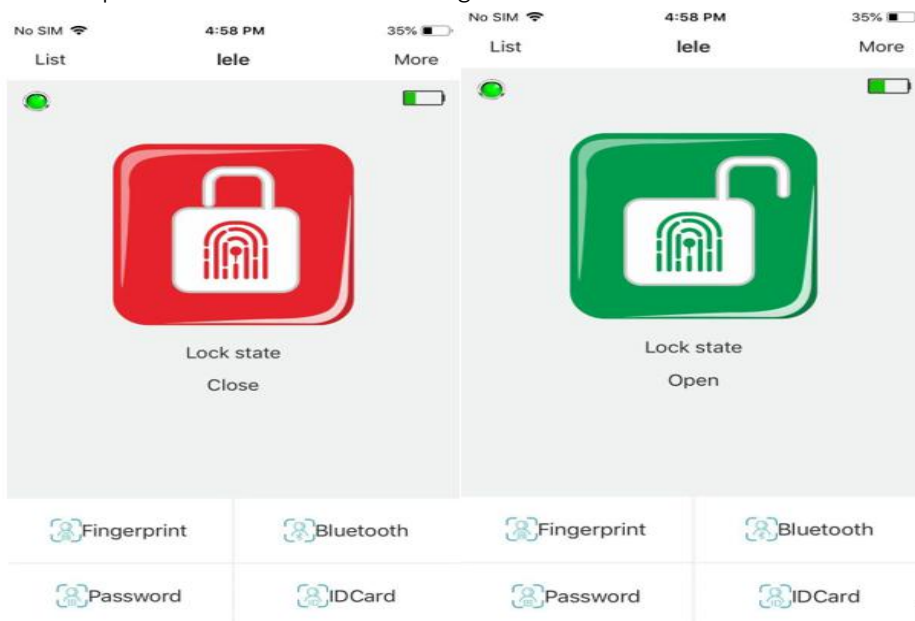
b. Fingerprint deletion method:

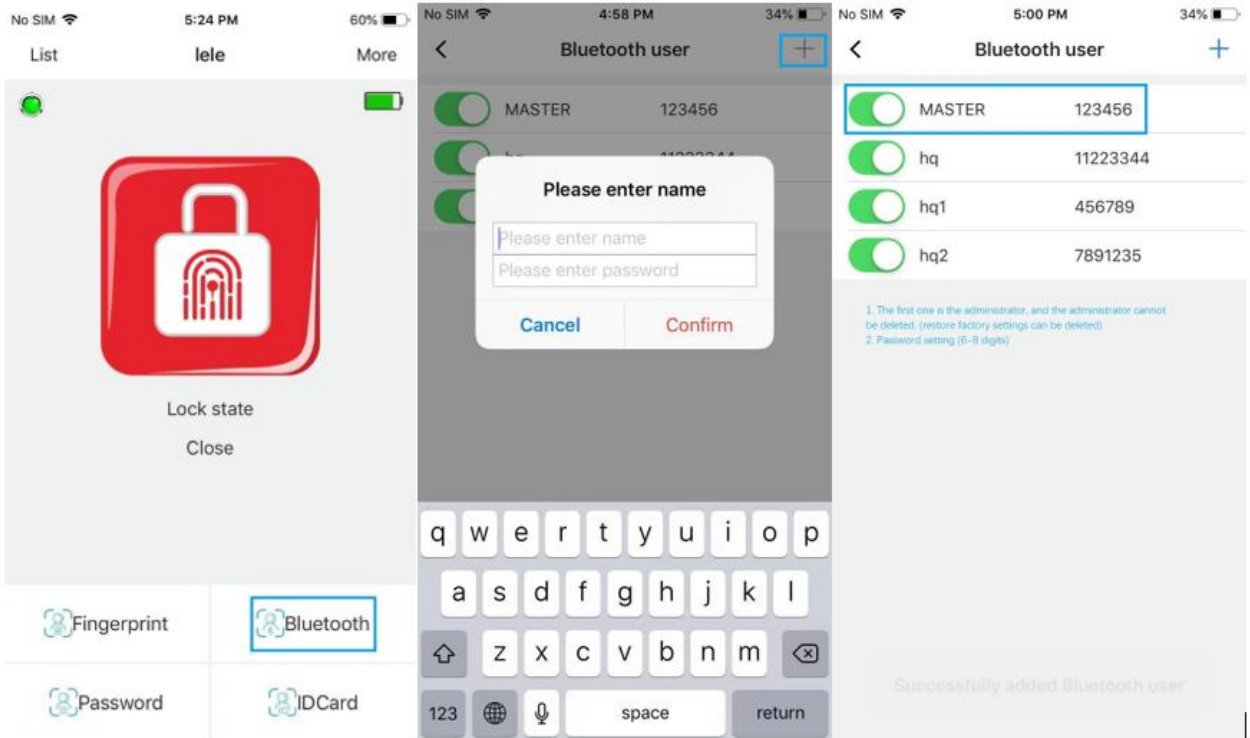
Press and hold the name of the user to be deleted for two seconds to delete this user. The first people are all administrator users, and the administrator user cannot be deleted. (Restore factory settings can be deleted). Swipe the user name to the left to key this user's unlock function.



(2) Bluetooth

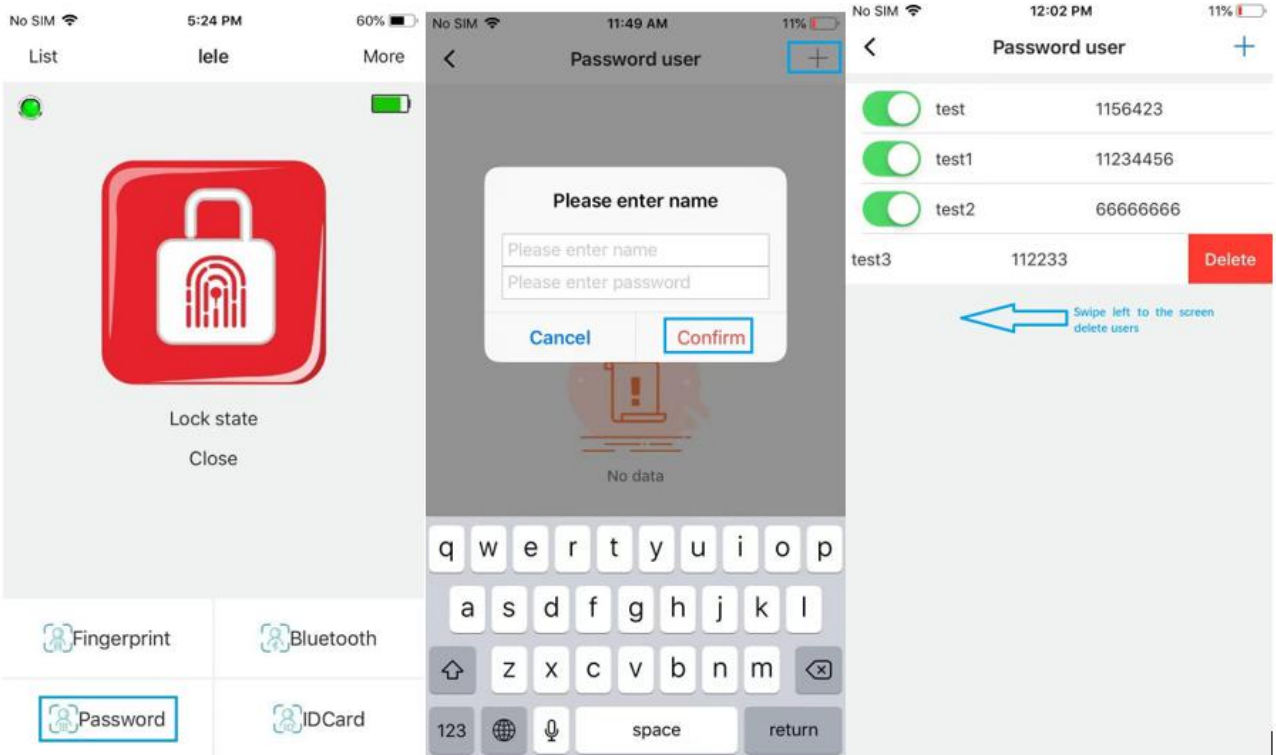
Open the APP and click the red lock icon at the top of the screen. When the icon changes to the green unlocked state, it means that the lock has been unlocked. Click the "Bluetooth" button at the bottom of the screen to perform Bluetooth user management





(3) Password(only for some models)

Users can unlock the lock by entering a six-digit password (some models do not have this function), and click "Password" at the bottom of the screen to set and delete the unlock password. The first three users are administrators and cannot be deleted, but can be deleted after restoring to factory settings. **(The number of the password cannot exceed the maximum number of the lock panel)**



(4) ID card(only for some models)

The user uses an ID card to unlock (some models do not have this function), click "ID Card" at the bottom of the screen to set the ID card unlock function, and click the "+" in the upper right corner of the interface to enter card user information, which can be set up to 50 Card users.

